



Where **Analog** and **Value** Meet

# Corporate Overview ▶▶▶▶

[www.towersemi.com](http://www.towersemi.com)

NASDAQ & TASE: TSEM

# Tower Semiconductor: **Where Analog and Value Meet** ▶▶▶▶

Tower Semiconductor, the leading foundry of high value analog semiconductor solutions, manufactures advanced analog integrated circuits, leading the analog ecosystem with high-quality, innovative technological and manufacturing solutions, providing strong competitive advantages in various growing markets.

The Company's strategic roadmap alignments and long-term partnerships with its profound customer base promotes continuous growth and frontier market position.

For over three decades Tower Semiconductor has continuously developed and provided the highest value analog semiconductor solutions. Through its vast knowledge of current and emerging market needs, the Company offers advanced analog technologies and manufacturing solutions for the forefront of the world's most exciting and growing arenas, such as automotive, consumer, medical, industrial and aerospace and defense, among others.

With ever-evolving capabilities, innovative mindset and focuses, Tower Semiconductor thrives and proceeds to drive full circle value creation, while being devoted to contribute and make positive and sustainable impact on the world.



## Our Vision ▶▶▶▶

Provide the highest value analog semiconductor solutions as validated by our customers, employees, shareholders and partners.

## Our Mission ▶▶▶▶

Being a trusted long-term partner with a positive and sustainable impact on the world through innovative analog technologies and manufacturing solutions.

## Our Value Vectors ▶▶▶▶

We pursue excellence in all we do from ideation through product shipment. Hence, we deliver the best experience to our customers and inspire our employees.





# At a glance

## Technology Leadership

**Leading the analog semiconductor ecosystem** by offering the widest range of customized analog technologies such as RF and HPA, Power Management, CIS, NIS and MEMs with cutting edge, innovative market solutions for its diversified and continuously expanding customer base. Focusing on areas we can provide a real, strong competitive advantage in while driving a positive and sustainable impact on the world with **full circle value creation**.

## Partnership Roadmap

**Trusted Long-Term Partner:** Based upon unparalleled trust and collaborative road-mapping and success alignment, we provide win-win differentiated solutions, enabling our customer to lead in their market segments, through teamwork and fully open channels of communication.

## Manufacturing Excellence

**Worldwide Manufacturing:** strong global presence in North America, Europe and Asia, operating seven worldwide manufacturing facilities (200mm and 300mm), fulfilling growing customer demand and providing capacity assurance, operational flexibility, with geographically spread dual-sourcing capabilities.

## Financial Strength

**Strong financial foundation** and business model with focus on margin expansion and free cash flow generation; enabling continuous realization of growth and value-add opportunities.

## Our People

**Over 5,500 worldwide highly devoted, talented, creative and skilled employees** with broad knowledge, specialized expertise and profound experience.

# Global Operations and Manufacturing Quality

Committed to excellence in everything we do, we continuously focus on our operational performance and maintaining excellent operational indices.

With our firm reputation as a leading foundry providing unique, high-end, analog technology manufacturing capabilities, along with our solid market alignment, we wisely invest in our worldwide manufacturing facilities to best support the ever-evolving needs and growing demand of our customer base.

Throughout our global manufacturing facilities, in Israel, US and Japan, we provide capacity assurance with high quality and flexible manufacturing capabilities serving fabless companies and IDMs looking to increase production capacity and diversify locations.

We are highly involved in driving green initiatives and are continuously expanding environmentally safe operational methodologies including solar renewable energy, water consumption efficiency, and recycling among others.



Migdal Haemek, ISRAEL	Migdal Haemek, ISRAEL	Newport Beach, CA, USA	San Antonio, TX, USA
<ul style="list-style-type: none"> <li>• 6" (150mm)</li> <li>• CMOS, CIS, Power, Power Discrete</li> <li>• 1µm to 0.35µm</li> <li>• Planarized BEOL, W and Oxide CMP</li> </ul>	<ul style="list-style-type: none"> <li>• 8" (200mm)</li> <li>• CMOS, CIS, Power, Power Discrete, RF Analog, MEMS</li> <li>• 0.18µm to 0.13µm</li> <li>• Cu and Al BEOL, EPI, 193nm Scanner</li> </ul>	<ul style="list-style-type: none"> <li>• 8" (200mm)</li> <li>• CMOS, CIS, RF Analog, MEMS</li> <li>• 0.18µm to 0.13µm</li> <li>• Al BEOL, SiGe, EPI</li> </ul>	<ul style="list-style-type: none"> <li>• 8" (200mm)</li> <li>• Power, RF Analog</li> <li>• 0.18µm</li> <li>• Al BEOL</li> </ul>
Arai, JAPAN	Tonami, JAPAN	Uozu, JAPAN	
<ul style="list-style-type: none"> <li>• 8" (200mm)</li> <li>• Analog, CIS</li> <li>• 0.13µm to 0.11µm</li> </ul>	<ul style="list-style-type: none"> <li>• 8" (200mm)</li> <li>• Analog, Power Discrete, NVM, CCD</li> <li>• 0.35µm to 0.15µm</li> </ul>	<ul style="list-style-type: none"> <li>• 12" (300mm)</li> <li>• Analog, CMOS, CIS, RFCMOS / SOI</li> <li>• 65nm and 45nm</li> </ul>	

# Technology Leadership

Based on its mature and highly reputable technology excellence, the Company drives positive and sustainable impact on the world through innovative analog technologies and manufacturing solutions.

Tower Semiconductor specializes in customized analog solutions for manufacturing differentiated products, offering cutting-edge process technologies including Radio Frequency (RF), High Performance Analog (HPA), Power Management, CMOS Image Sensors (CIS), Non-Imaging Sensors (NIS) and Mixed-Signal CMOS, as well as Micro-Electro-Mechanical Systems (MEMS) capabilities. Tower Semiconductor also offers its unique

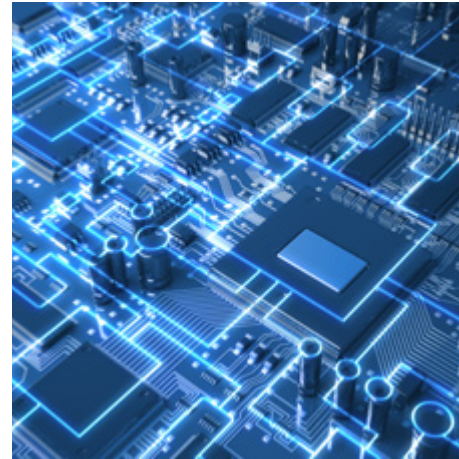
Transfer Optimization and development Process Services (TOPS) to IDMs and fabless companies.

To complement its advanced technology platforms, the Company also offers world-class design enablement services, providing mature and valuable tools that enable a quick and accurate design cycle.



## **Radio Frequency and High Performance Analog** Enabling a New Era of Communication

Providing industry-leading low-loss, high-dynamic range technologies for wireless RF to mmWave communications. Tower Semiconductor's SiGe BiCMOS, RF-SOI and RF-CMOS technology solutions enable high-speed, low-noise and low-power products for consumer, infrastructure, and automotive applications.



## **Power Management** The Power to Lead

Our Power Management platform provides highly modular, industry leading BCD technologies, with best-in-class power efficiency across a wide range of voltages, delivering comprehensive solutions for the consumer, industrial, infrastructure, automotive and medical markets.



## **CMOS Image Sensors**

### **Cutting Edge Imaging Solutions Customized for Your Needs**

Offering high-end, state-of-the-art technology solutions, unique customization processes, and unmatched design flexibility enabling performance-optimized pixel technology with advanced features, and reduced die size, addressing the consumer, industrial, medical, high-end photography, automotive, and environmental applications.



## **Non Imaging Sensors**

### **Expand Your Sensing Capabilities, Lead the World of Sensors**

Our proven and flexible capabilities and technological platforms enables fabricating diverse sensing devices, consisting of unique ionizing radiation sensors, remote temperature sensors, magnetic (TMR), UV radiation and gas sensors. In addition, we supply technology for LCOS and uOLED display backplanes, including stitching technology support for large silicon-based displays.



## **Automotive**

### **Innovative Analog Solutions for Smarter Automobiles**

Our broad range of mature and modular analog technology platforms for imaging and sensing, wireless and wireline communications, mixed signal and power management, provides the most comprehensive and advanced solutions designed to best support the entire automotive ecosystem.



## **Aerospace and Defense**

Bringing a broad range of extensive capabilities and commercially available technologies and services to the A&D community.

*Tower Semiconductor Newport Beach is an ITAR registered supplier providing an expanded technology portfolio including 65nm technology access for next-generation ROICs*



## **Design Enablement**

### **Design it once. Design it right.**

Our distinctive design enablement platform provides a robust design ecosystem, which together with our advanced analog technologies, promotes the highest level of collaboration driving our customers' innovative ideas into value.



**TOWER SEMICONDUCTOR  
HEADQUARTERS**

Tower Semiconductor Ltd.  
Ramat Gavriel Industrial Park  
20 Shaul Amor Avenue  
P.O. Box 619  
Migdal Haemek 2310502, Israel  
Phone: +972-4-6506611  
E-mail: [info@towersmi.com](mailto:info@towersmi.com)



**TOWER SEMICONDUCTOR  
NEWPORT BEACH, INC.**

**Tower Semiconductor U.S. Subsidiary**  
4321 Jamboree Road  
Newport Beach, CA 92660  
USA  
Tel: +1 (949) 435-8000



**TOWER SEMICONDUCTOR  
SAN ANTONIO, INC.**

**Tower Semiconductor U.S. Subsidiary**  
9651 Westover Hills Boulevard  
San Antonio, TX 78251  
USA  
Tel: +1 (210) 522-7000



**TOWER SEMICONDUCTOR  
WORLDWIDE DESIGN CENTER**

Bet Shoham  
HaMahshev 1  
Beit Shoham, 2nd floor  
Netanya 4250703  
Israel  
Tel: +972-9-8636361